



MAC Viper Profile

The MAC Viper Profile is a new breed of high-output profile luminaire with an exceptional feature set, superior light quality and a highly efficient optical system. It outperforms all market-leading profiles in the 1200-watt range and is even an alternative to 1500-watt fixtures. The Viper Profile is not only brighter, it is also a faster and more compact solution. With its 1000-watt HID source, the Viper consumes less power, making it over 50% more efficient than its 1200-watt rivals.

26000 Lumens – Excellent light quality with a very flat and uniform field and 6000K color temperature

1:4 zoom – Fast zoom with auto-linked focus

Large aperture front lens – The 140 mm front lens exceeds the size of any other fixture in this segment for just the right fat beam look

FEATURES

- 26000 Lumens – Excellent light quality with a very flat and uniform field and 6000K color temperature
- 1:4 zoom – Fast zoom with auto-linked focus
- Large aperture front lens – The 140 mm front lens exceeds the size of any other fixture in this segment for just the right fat beam look
- 2 x 5-slot rotating gobo wheels - All glass gobos with optimal focal separation for superior morphing effects
- FX wheel – Patent-pending FX wheel provides an additional 4 fixed gobos and 135° animation effect
- CMY – Vibrant color mixing with a superior palette of colors including true reds, rich ambers, primary green and deep blues
- 8-slot color wheel – Static colors and correction filters for added color choice and bump effects
- Linear CTO – Daylight to tungsten CCT control and expansion of the CMY palette
- Dimmer and shutter - Combined dimmer/shutter system with intensity effects, instant blackout/open and smooth fades
- Iris – Fast and tight iris with adjustable dynamic effects
- Strobe – Diverse strobe effects using mechanical or electronic control or in combination
- Soft frost – A light frost leaves gobo artwork visible with a beautiful soft edge. Includes a linear focus blurring option
- 4-facet prism – Real beam separation with rotation and index control for dynamic effects and accurate tiling

TECHNICAL SPECIFICATIONS

Physical

Length (Head): 566 mm (22.3 in.)
Width: 472 mm (18.6 in.)
Width (Base): 335 mm (13.2 in.)
Height (head straight up): 731 mm (28.8 in.)
Height (maximum): 748 mm (29.5 in.)
Weight: 37.2 kg (82.0 lbs.)

Dynamic Effects

Color mixing: CMY, independently variable 0 - 100%
Color temperature control: CTO, variable 6000 - 3200 K
Color wheel: 8 interchangeable dichroic filters + open, indexing, continuous rotation,

random color
Aerial wheel: 5 interchangeable aerial effects + open, indexing, continuous rotation and shake
Breakup wheel: 5 interchangeable texture/breakup gobos + open, indexing, continuous rotation and shake
FX wheel: Interchangeable static gobo and gobo animation effects
Prism: Interchangeable 4-facet rotating prism
Iris: 0 - 100%, pulse effects
Frost: Frost filter
Mechanical dimmer/shutter: 0 - 100% continuous dimming, variable & random strobe & pulse effects, instant open & blackout
Dimming options: Choice of four dimming curves
Focus: Range varies with zoom angle, from 2 m / 6 m to infinity (approx.)
Zoom-focus linking system: 3-zone
Zoom: Motorized
Pan: 540°
Tilt: 268°
Position correction system: Absolute position monitoring

Control and Programming

DMX channels: 26/34
Setting and addressing: Control panel with backlit graphic display and jog wheel or via DMX
16-bit control: Aerial, breakup and texture effect rotation and indexing, focus, zoom, pan and tilt
DMX compliance: USITT DMX512-A
RDM compliance: ANSI/ESTA E1.20
Receiver: Opto-isolated RS-485
Firmware update: USB memory device or USB/DMX hardware interface over DMX link

Lamp

Type: 1000 W short-arc discharge
Color temperature: 6000 K
CRI (Color rendering index): >85
Average lifetime: 750 hours
Socket: PGJX36
Ballast: Electronic
Approved lamps: Osram HTI 1000/PS Lok-it, Philips MSR Gold MiniFastFit 1000W

Optics

Zoom range: 10-44° (1:4)
Output: 26 000 lm

Service Utilities

Fixture identification: User-settable fixture ID number

Construction

Color(s): Black
Housing: UV-resistant fiber-reinforced composite
Reflector: Glass, cold light
Protection rating: IP20

Gobos

Size: E27 (Size E, max. image diameter 27 mm)
Approved material: Borosilicate 3.3 or better with dichroic or heavy matted aluminum coating (metal gobos not approved)
Outside diameter: 37.5 mm +/- 0.2 mm (1.5 in. +/- 0.01 in.)
Maximum image diameter: 27 mm (1.1 in.)
Maximum thickness: 1.1 mm +/- 0.1 mm (0.1 in. +/- 0.01 in.)

Installation

Mounting points: Eight quarter-turn locking points
Orientation: Any
Minimum distance to illuminated surfaces: 3.4 m (11.2 ft.)
Minimum distance to combustible materials: 0.3 m (1.0 ft.)

Connections

AC power input: Neutrik PowerCon
DMX and RDM data in/out: 5-pin locking XLR
USB memory devices: USB host socket

Electrical

AC power: 120-240 V nominal, 50/60 Hz
Power supply unit: Auto-ranging electronic switch-mode
Typical half-cycle RMS inrush current: 16.2 A

Typical Power and Current

120 V, 60 Hz: 1225 W, 10.3 A, PF 0.999
208 V, 60 Hz: 1190 W, 5.8 A, PF 0.996
230 V, 50 Hz: 1186 W, 5.2 A, PF 0.994
240 V, 50 Hz: 1194 W, 5.0 A, PF 0.993
*Measurements made at nominal voltage. Allow for a deviation of +/- 10%.:
PF = power factor:*

Thermal

Cooling: Filtered forced air (temperature-regulated, low noise)
Maximum ambient temperature (Ta max.): 40° C (104° F)

Minimum ambient temperature (Ta min.): 5° C (41° F)
Maximum surface temperature, steady state, Ta=40° C (104° F): 150° C (302° F)
Total heat dissipation (calculated, +/- 10% at 120 V, 60 Hz): 4180 BTU/hr

Approvals

EU safety: EN 60598-2-17 (EN 60598-1), EN 62471
EU EMC: EN 55015, EN 55103-1, EN 55103-2, EN 61547
US safety: UL 1573
US EMC: FCC Part 15 Class A
Canadian safety: CSA E598-2-17 (CSA E60598-1)
Canadian EMC: ICES-003 Class A
Australia/NZ: C-TICK N4241

Included Items

Lamp (installed): P/N 97010346
Two Omega clamp attachment brackets with 1/4-turn fasteners: P/N 91602001
Safety and installation manual: P/N 35000258

Accessories

Power cable, 12 AWG, SJT, with Neutrik PowerCon NAC3FCA input connector, 3 m (9.9 ft.): P/N 11541503
Neutrik PowerCon NAC3FCA power input connector, cable mount, blue: P/N 05342804
Omega clamp attachment bracket with 1/4-turn fasteners: P/N 91602001
T-shaped omega clamp attachment bracket with 1/4-turn fasteners: P/N 91602008
Half-coupler (tube) clamp: P/N 91602005
G-clamp (suspension with yoke vertically downwards only): P/N 91602003
Quick-trigger clamp (suspension with yoke vertically downwards only): P/N 91602007
Safety cable, safe working load 50 kg (110.3 lbs.): P/N 91604003
Flightcase for 2 x MAC Viper: P/N 91510180

Related Items

Martin USB Duo™ DMX Interface Box: P/N 90703010
Martin RDM 5.5 Splitter™: P/N 90758150

Spare Parts

Osram HTI 1000/PS Lok-it lamp: P/N 97010346
Air filter, head, MAC Viper (sold in multiples of 12): P/N 20800270

Ordering Information

MAC Viper™ Profile in cardboard box: P/N 90233000
MAC Viper™ Profile in double flightcase: P/N 90233010

Shipping Information

In cardboard carton:
Shipping dimensions (LxWxH): 580 x 450 x 870 mm (22.9 x 17.8 x 34.3 in.)
Shipping weight: 41 kg (90.4 lbs.)
Quantity on pallet: 8 fixtures
Pallet dimensions (LxWxH): 1200 x 1000 x 1860 mm (47.3 x 39.4 x 73.3 in.)
Pallet weight (incl. pallet): 350 kg (771.7 lbs.)

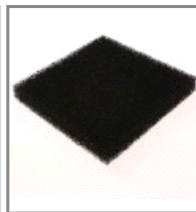
In double flightcase:



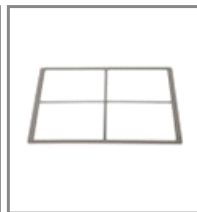
A C C E S S O R I E S



3m pwr.cable
w.PwrCon
NAC3FCA, AWG12
SJT
P/N: 11541503



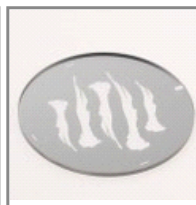
Air filter
P/N: 20800280



Filter support plate
P/N: 23821750



Flightcase for 2 x
MAC Viper
P/N: 91510180



G-Clamp
P/N: 91602003

Gobo, Big Bones,
D37.5/d27, hm
glass
P/N: 43092009

Gobo, Bite It,
D37.5/d27, hm
glass
P/N: 43092011

Gobo, Brick It,
D37.5/d27, hm
glass
P/N: 43092008

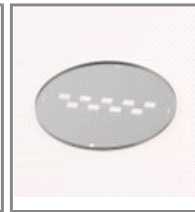
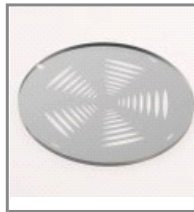


Gobo, Dots In
Space, D37.5/d27,
hm glass
P/N: 43092005

Gobo, Happy,
D37.5/d27, hm
glass
P/N: 43092006

Gobo, Limbo
Crystal, D37.5,
tex. glass,
P/N: 62325150

Gobo, Sonar,
D37.5/d27, hm
glass
P/N: 43092002

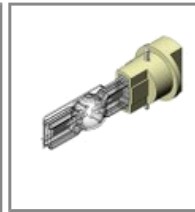


Gobo, Symmetrical
Leggings,
D37.5/d27, h
P/N: 43092010

Gobo, Too Many
Doctors,
D37.5/d27, hm gl
P/N: 43092001

Gobo, Zip It,
D37.5/d27, hm
glass
P/N: 43092017

Half-coupler
clamp for Ø50
P/N: 91602005



Omega bracket
with 1/4 turn
fasteners
P/N: 91602001

Osram HTI
1000/PS Lok-it
P/N: 97010346

PowerCon
NAC3FCA Power
Input Connector
P/N: 05342804

Quick-trigger
clamp Ø38.1-
51mm
P/N: 91602007



Safety wire, 50kg
SWL
P/N: 91604003

T-shape Omega
bracket w 1/4 turn
P/N: 91602008